

# \$319,000 - 14932 43 Avenue, Edmonton

MLS® #E4422016

**\$319,000**

3 Bedroom, 2.50 Bathroom, 1,606 sqft  
Condo / Townhouse on 0.00 Acres

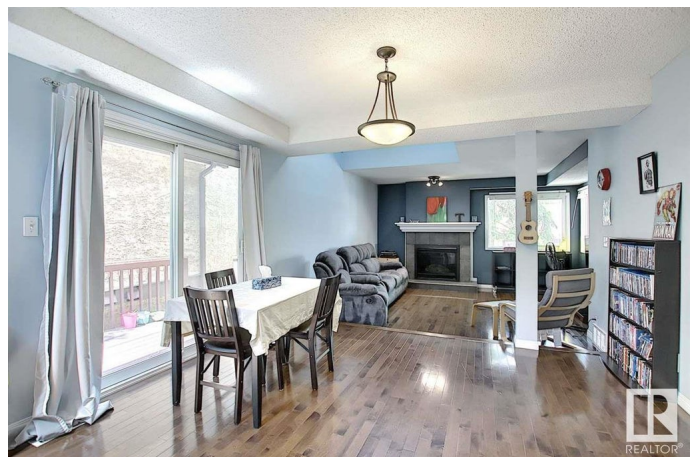
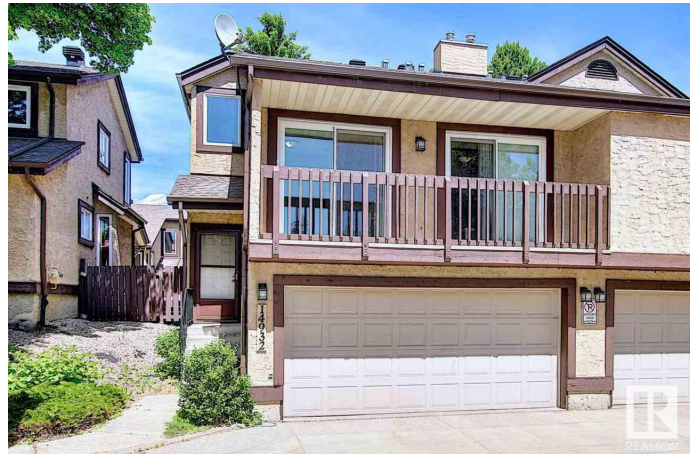
Ramsay Heights, Edmonton, AB

Big, Bright & Charming describe this super spacious end unit townhouse situated in the Courtyards of Riverbend. This property has 1600 SF + of fully finished living space over 4 split levels & has been tastefully renovated. The main floor offers a generous living room with gas fireplace, open dining space, soaring 16'™ ceiling, laundry and 2-piece bath. The galley kitchen is lovely with tons of counter and cabinet space. The 2nd level offers two bedrooms and 4-pc bath. The upper level has a loft area that overlooks the main floor and leads to the owner's™ suite with a huge 5-piece ensuite and tons of closet space. Basement area is perfect for media room or gym & has tons of storage. Other features include hardwood flooring & tiles, double attached garage, balcony and patio, newer shingles & windows. The complex is well managed, Prime location in sought after Ramsey Heights with all types of amenities, parks, schools, & public transportation. Ready for immediate possession!

Built in 1981

## Essential Information

MLS® #	E4422016
Price	\$319,000
Bedrooms	3



Bathrooms	2.50
Full Baths	2
Half Baths	1
Square Footage	1,606
Acres	0.00
Year Built	1981
Type	Condo / Townhouse
Sub-Type	Townhouse
Style	4 Level Split
Status	Active

### **Community Information**

Address	14932 43 Avenue
Area	Edmonton
Subdivision	Ramsay Heights
City	Edmonton
County	ALBERTA
Province	AB
Postal Code	T6H 5S1

### **Amenities**

Amenities	No Animal Home, No Smoking Home, Parking-Visitor, See Remarks
Parking	Double Garage Attached

### **Interior**

Interior Features	ensuite bathroom
Appliances	Dishwasher-Built-In, Dryer, Refrigerator, Stove-Electric, Washer
Heating	Forced Air-2, Natural Gas
Stories	4
Has Basement	Yes
Basement	Partial, Finished

### **Exterior**

Exterior	Wood, Stucco
Exterior Features	Low Maintenance Landscape, Playground Nearby, Public Transportation, Schools, Shopping Nearby
Roof	Asphalt Shingles
Construction	Wood, Stucco
Foundation	Concrete Perimeter

## School Information

Elementary	Earl Buxton
Middle	Riverbend Jr
High	Harry Ainley

## Additional Information

Date Listed	February 19th, 2025
Days on Market	23
Zoning	Zone 14
Condo Fee	\$491

DATA IS DEEMED RELIABLE BUT IS NOT GUARANTEED ACCURATE BY THE REALTORS® ASSOCIATION OF EDMONTON. COPYRIGHT 2025 BY THE REALTORS® ASSOCIATION OF EDMONTON. ALL RIGHTS RESERVED. Trademarks are owned or controlled by the Canadian Real Estate Association (CREA) and identify real estate professionals who are members of CREA (REALTOR®, REALTORS®) and/or the quality of services they provide (MLS®, Multiple Listing Service®)

Listing information last updated on March 14th, 2025 at 7:02am MDT