

\$239,900 - 409 1520 Hammond Gate, Edmonton

MLS® #E4422833

\$239,900

2 Bedroom, 2.00 Bathroom, 889 sqft
Condo / Townhouse on 0.00 Acres

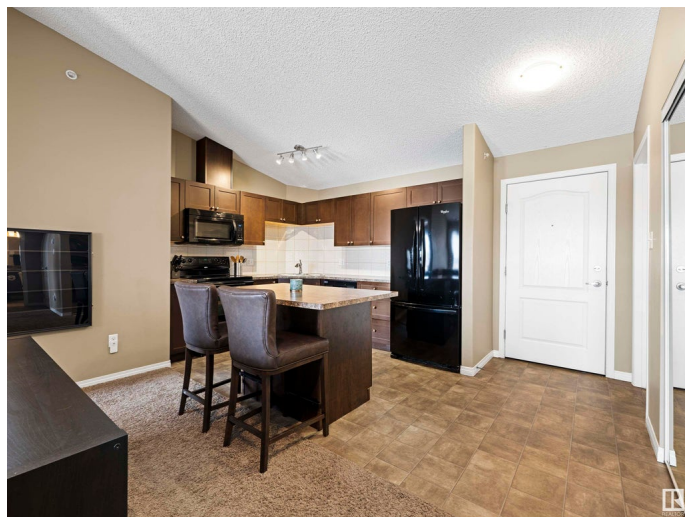
The Hamptons, Edmonton, AB

Welcome to the Hamptons! This cozy 2-bedroom, 2-bath condo is located on the top floor and features in-suite laundry for added convenience. Situated in the desirable Park Place South Hamptons, this home boasts an open-concept design with vaulted ceilings that create a light, airy feel. The kitchen, dining, and living areas flow seamlessly—perfect for daily living and entertaining. The modern kitchen features sleek countertops, a stylish backsplash, and plenty of cabinet space. The large island is ideal for extra prep space or casual dining. Big windows bring in natural light and offer lovely neighbourhood views. Both bedrooms are spacious, with the primary suite including a walk-in closet and a 4-piece ensuite bathroom. Enjoy your private balcony—perfect for morning coffee or evening relaxation. This home also includes Hunter Douglas blinds. The unit comes with a titled, heated underground parking spot, is pet-friendly, and is close to major roads and public transit. Condo fees cover heat, water, and sewer

Built in 2008

Essential Information

MLS® #	E4422833
Price	\$239,900



Bedrooms	2
Bathrooms	2.00
Full Baths	2
Square Footage	889
Acres	0.00
Year Built	2008
Type	Condo / Townhouse
Sub-Type	Lowrise Apartment
Style	Single Level Apartment
Status	Active

Community Information

Address	409 1520 Hammond Gate
Area	Edmonton
Subdivision	The Hamptons
City	Edmonton
County	ALBERTA
Province	AB
Postal Code	T6M 0J4

Amenities

Amenities	Parking-Visitor, See Remarks
Parking	Heated, Underground

Interior

Interior Features	ensuite bathroom
Appliances	Dishwasher-Built-In, Dryer, Refrigerator, Stove-Electric, Washer
Heating	In Floor Heat System, Natural Gas
# of Stories	4
Stories	1
Has Basement	Yes
Basement	None, No Basement

Exterior

Exterior	Wood, Brick, Vinyl
Exterior Features	Public Transportation, Schools, Shopping Nearby
Roof	Asphalt Shingles
Construction	Wood, Brick, Vinyl
Foundation	Concrete Perimeter

School Information

Elementary	Bessie Nichols School
Middle	Kim Hung School
High	Jasper Place School

Additional Information

Date Listed	February 25th, 2025
Days on Market	17
Zoning	Zone 58
Condo Fee	\$488

DATA IS DEEMED RELIABLE BUT IS NOT GUARANTEED ACCURATE BY THE REALTORS® ASSOCIATION OF EDMONTON. COPYRIGHT 2025 BY THE REALTORS® ASSOCIATION OF EDMONTON. ALL RIGHTS RESERVED. Trademarks are owned or controlled by the Canadian Real Estate Association (CREA) and identify real estate professionals who are members of CREA (REALTOR®, REALTORS®) and/or the quality of services they provide (MLS®, Multiple Listing Service®)

Listing information last updated on March 14th, 2025 at 6:32am MDT