

\$845,000 - 31 Glen Meadow Crescent, St. Albert

MLS® #E4423033

\$845,000

5 Bedroom, 3.50 Bathroom, 2,411 sqft
Single Family on 0.00 Acres

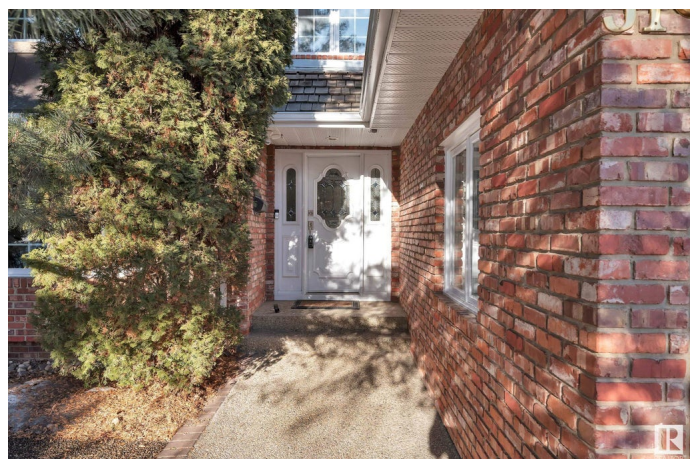
Grandin, St. Albert, AB

Tucked away in a BREATHTAKING acreage-like setting in Grandin's most desired cul-de-sac! This Heredity built character home on 60 x 120 lot offers over 3600 sqft of livable space featuring 5 bedrooms & finished basement. Outstanding curb appeal with park-like private back yard complimented by massive 2-tiered deck, stoned pathway, fire-pit, in-ground sprinkler, landscape lighting, backing onto ravine & scenic greenbelt. Updates include, fence, cedar shingle roof, 2-HWT's, renovated bathrooms w/soaker tub in ensuite & steam shower generator in basement bath. Designed with distinction showcasing gorgeous oak staircase w/open-to-below views, custom oak built-in cabinetry/trim throughout, built-in window benches, granite kitchen countertops & SS appliances. 2 air conditioners, 2 furnaces, vaulted ceilings, crown molding, interior French doors, impressive gas fireplace & full-size laundry room w/sink & cabinets. Triple-wide extended driveway off double attached heated garage. This is an amazing home, MUST SEE!

Built in 1986

Essential Information

MLS® #	E4423033
Price	\$845,000



Bedrooms	5
Bathrooms	3.50
Full Baths	3
Half Baths	1
Square Footage	2,411
Acres	0.00
Year Built	1986
Type	Single Family
Sub-Type	Detached Single Family
Style	2 Storey
Status	Active

Community Information

Address	31 Glen Meadow Crescent
Area	St. Albert
Subdivision	Grandin
City	St. Albert
County	ALBERTA
Province	AB
Postal Code	T8N 3A2

Amenities

Amenities	Air Conditioner, Closet Organizers, Deck, Sprinkler Sys-Underground, Television Connection, Vaulted Ceiling, Wall Unit-Built-In
Parking Spaces	4
Parking	Double Garage Attached, Front Drive Access

Interior

Interior Features	ensuite bathroom
Appliances	Air Conditioning-Central, Dishwasher-Built-In, Dryer, Garage Control, Oven-Built-In, Oven-Microwave, Refrigerator, Storage Shed, Stove-Countertop Electric, Vacuum System Attachments, Vacuum Systems, Washer, Water Softener, Window Coverings, Garage Heater
Heating	Forced Air-2, Natural Gas
Fireplace	Yes
Fireplaces	Glass Door, Mantel, Oak Surround
Stories	3
Has Basement	Yes
Basement	Full, Finished

Exterior

Exterior	Wood, Brick, Vinyl
Exterior Features	Backs Onto Park/Trees, Cul-De-Sac, Fenced, Golf Nearby, Landscaped, No Back Lane, No Through Road, Park/Reserve, Playground Nearby, Schools, Shopping Nearby
Roof	See Remarks
Construction	Wood, Brick, Vinyl
Foundation	Concrete Perimeter

School Information

Elementary	Leo Nickerson Elementary
Middle	Lorne Akins Junior High
High	Paul Kane High School

Additional Information

Date Listed	February 27th, 2025
Days on Market	13
Zoning	Zone 24

DATA IS DEEMED RELIABLE BUT IS NOT GUARANTEED ACCURATE BY THE REALTORS® ASSOCIATION OF EDMONTON. COPYRIGHT 2025 BY THE REALTORS® ASSOCIATION OF EDMONTON. ALL RIGHTS RESERVED. Trademarks are owned or controlled by the Canadian Real Estate Association (CREA) and identify real estate professionals who are members of CREA (REALTOR®, REALTORS®) and/or the quality of services they provide (MLS®, Multiple Listing Service®)

Listing information last updated on March 12th, 2025 at 8:48am MDT