

Courtesy Of Kamran Amjad Of MaxWell Progressive

\$250,000 - 320 1204 156 Street, Edmonton

MLS® #E4423339

\$250,000

2 Bedroom, 2.00 Bathroom, 1,091 sqft
Condo / Townhouse on 0.00 Acres

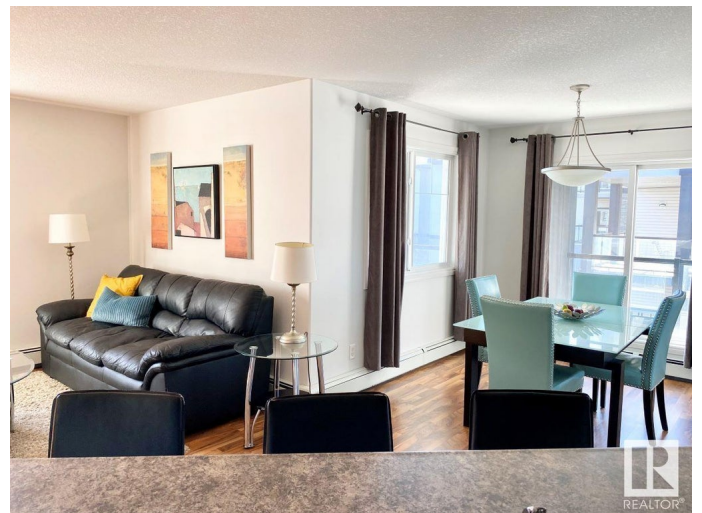
South Terwillegar, Edmonton, AB

Welcome to Ospin Terrace, one of the most sought-after condo developments in South Terwillegar! This spacious 3rd-floor corner unit offers 2 bedrooms and 2 bathrooms, including a primary bedroom with an ensuite. The open-concept living area includes a cozy living room, a dining area, and a functional kitchen, all designed for comfort and convenience. Large windows throughout the unit fill the space with natural light, creating a bright and welcoming atmosphere. Enjoy the ease of in-suite laundry and a large balcony, perfect for relaxing and enjoying the fresh air. This unit also includes one assigned heated underground parking stall for added convenience. The building features a gym and a social room. Ideally located close to shopping, schools, restaurants, and more! Perfect for first-time homebuyers or as a fantastic rental investment!

Built in 2007

Essential Information

MLS® #	E4423339
Price	\$250,000
Bedrooms	2
Bathrooms	2.00
Full Baths	2
Square Footage	1,091



Acres	0.00
Year Built	2007
Type	Condo / Townhouse
Sub-Type	Lowrise Apartment
Style	Single Level Apartment
Status	Active

Community Information

Address	320 1204 156 Street
Area	Edmonton
Subdivision	South Terwillegar
City	Edmonton
County	ALBERTA
Province	AB
Postal Code	T6R 0R6

Amenities

Amenities	Recreation Room/Centre, Vinyl Windows, See Remarks
Parking Spaces	1
Parking	Heated, Underground

Interior

Interior Features	ensuite bathroom
Appliances	Dishwasher-Built-In, Dryer, Microwave Hood Fan, Refrigerator, Stove-Electric, Washer, Window Coverings
Heating	Baseboard, Natural Gas
# of Stories	4
Stories	4
Has Basement	Yes
Basement	See Remarks, No Basement

Exterior

Exterior	Wood, Vinyl
Exterior Features	Flat Site, Landscaped, Playground Nearby, Public Swimming Pool, Public Transportation, Schools, Shopping Nearby
Roof	Asphalt Shingles
Construction	Wood, Vinyl
Foundation	Concrete Perimeter

School Information

Elementary	Esther Starkman School
Middle	Esther Starkman School
High	Lillian Osborne School

Additional Information

Date Listed	February 28th, 2025
Days on Market	14
Zoning	Zone 14
Condo Fee	\$640

DATA IS DEEMED RELIABLE BUT IS NOT GUARANTEED ACCURATE BY THE REALTORS® ASSOCIATION OF EDMONTON. COPYRIGHT 2025 BY THE REALTORS® ASSOCIATION OF EDMONTON. ALL RIGHTS RESERVED. Trademarks are owned or controlled by the Canadian Real Estate Association (CREA) and identify real estate professionals who are members of CREA (REALTOR®, REALTORS®) and/or the quality of services they provide (MLS®, Multiple Listing Service®)

Listing information last updated on March 14th, 2025 at 9:32am MDT