

Courtesy Of Selena Atkinson Of Sweetly

\$210,000 - 473 Dunluce Road, Edmonton

MLS® #E4425330

\$210,000

3 Bedroom, 1.50 Bathroom, 1,150 sqft

Condo / Townhouse on 0.00 Acres

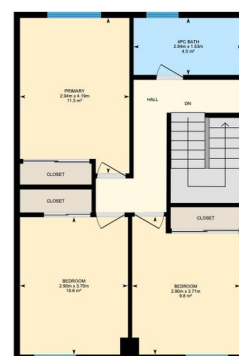
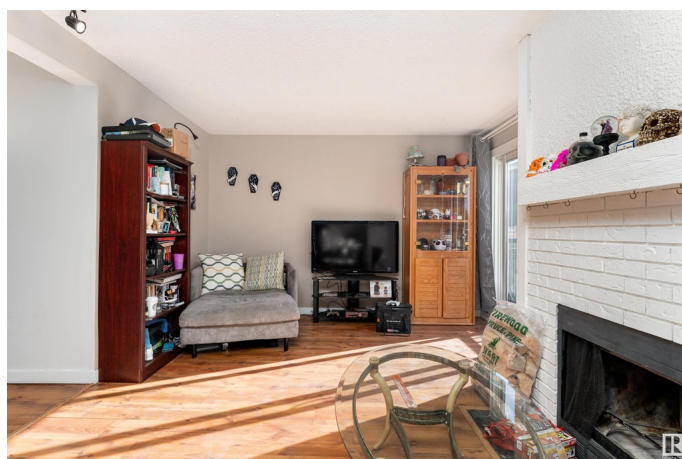
Dunluce, Edmonton, AB

Attention first time home buyers and investors! This affordable & charming townhouse in North Edmonton is ready for you to call your own and features 3-bedrooms, 1.5-bathrooms with a partially finished with a large den. This is opportunity you've been waiting for. Step inside to find a bright and spacious living area with large windows that fill the space with natural light, a wood burning fire place and a deck off the living space to your private, fenced, west facing back yard. The functional kitchen/dining offers ample cabinetry, a pantry and enough space for a six setting table making meal prep and entertaining a breeze. Upstairs, you'll find three generous-sized bedrooms and a full bathroom.

Built in 1980

Essential Information

MLS® #	E4425330
Price	\$210,000
Bedrooms	3
Bathrooms	1.50
Full Baths	1
Half Baths	1
Square Footage	1,150
Acres	0.00
Year Built	1980



Type	Condo / Townhouse
Sub-Type	Townhouse
Style	2 Storey
Status	Active

Community Information

Address	473 Dunluce Road
Area	Edmonton
Subdivision	Dunluce
City	Edmonton
County	ALBERTA
Province	AB
Postal Code	T5X 2L9

Amenities

Amenities	On Street Parking, Deck, No Smoking Home, Parking-Plug-Ins, Parking-Visitor, Vinyl Windows
Parking Spaces	1
Parking	Stall

Interior

Appliances	Dishwasher-Built-In, Dryer, Refrigerator, Stove-Electric, Washer
Heating	Forced Air-1, Natural Gas
Stories	2
Has Basement	Yes
Basement	Full, Partially Finished

Exterior

Exterior	Wood, Vinyl
Exterior Features	Fenced, Flat Site, See Remarks
Roof	Asphalt Shingles
Construction	Wood, Vinyl
Foundation	Concrete Perimeter

Additional Information

Date Listed	March 12th, 2025
Days on Market	37
Zoning	Zone 27
Condo Fee	\$423

DATA IS DEEMED RELIABLE BUT IS NOT GUARANTEED ACCURATE BY THE REALTORS® ASSOCIATION OF EDMONTON. COPYRIGHT 2025 BY THE REALTORS® ASSOCIATION OF EDMONTON. ALL RIGHTS RESERVED. Trademarks are owned or controlled by the Canadian Real Estate Association (CREA) and identify real estate professionals who are members of CREA (REALTOR®, REALTORS®) and/or the quality of services they provide (MLS®, Multiple Listing Service®)

Listing information last updated on April 18th, 2025 at 1:32pm MDT