

\$729,900 - 176 Caledon Crescent Crescent, Spruce Grove

MLS® #E4428362

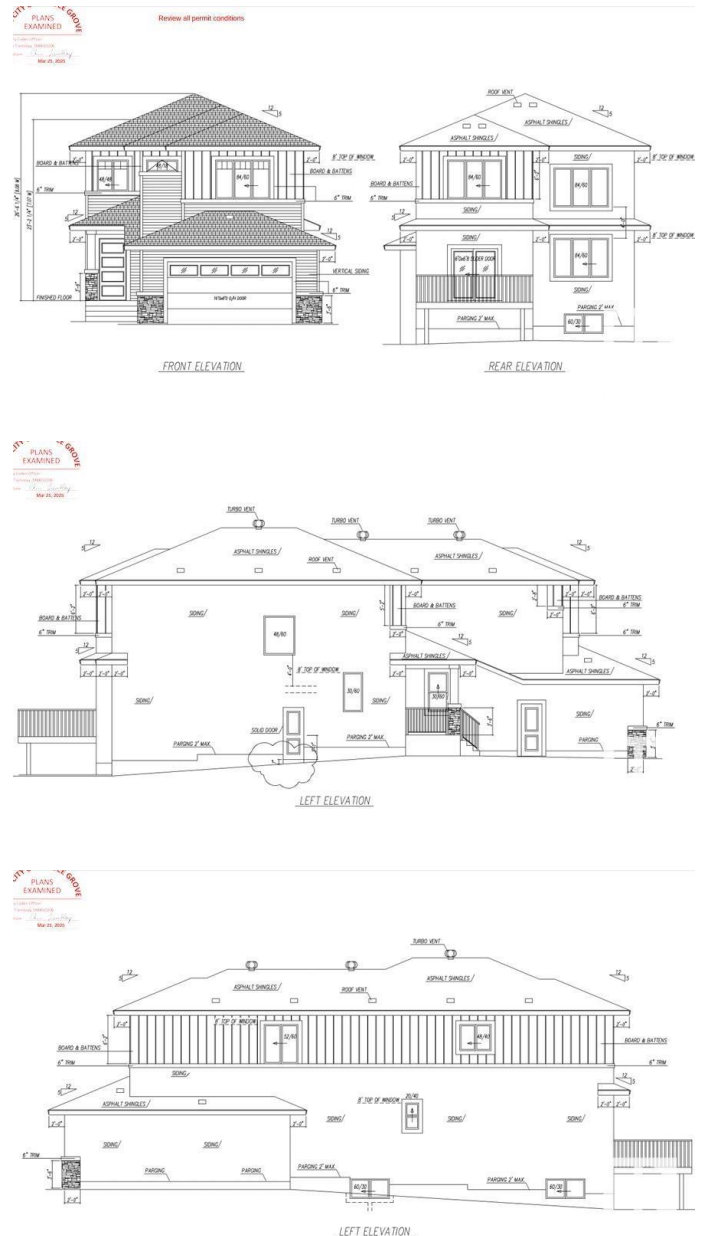
\$729,900

4 Bedroom, 4.00 Bathroom, 2,424 sqft
Single Family on 0.00 Acres

Copperhaven, Spruce Grove, AB

Under Construction ! Opportunity to CUSTOMIZE ! BRAND NEW, 30-foot wide partially WALKOUT home, spanning 2,500 sq ft with 4 bedrooms and 4 full bathrooms, including 2 MASTER SUITES, BACKING TO POND. This HIGH-END property features PREMIUM FINISHES in every corner, LUXURY vinyl plank flooring, CUSTOM spindle railing, and 3-tone cabinets. The EXTENDED KITCHEN boasts a bar, SPICE KITCHEN with window, and upgraded quartz countertops. Enjoy an OPEN-TO-ABOVE living area with an 18-FOOT CEILING, ELECTRIC FIREPLACE, accent wall, and abundant natural light from premium TRIPLE-PANE WINDOWS. Highlights include a bonus room, laundry with sink & cabinet space, basement SIDE ENTRANCE, and a FULLY FINISHED DECK. With 9-FOOT CEILINGS on all three levels, PREMIUM LIGHTING, MULTIPLE INDENT CEILINGS with rope lights, FEATURED WALLS, and a main-floor bedroom with full washroom, this home exudes luxury. A walkway on one side ensures no immediate neighbors. Steps from three schools and parks, with quick amenity access!

Built in 2025



Essential Information

MLS® #	E4428362
Price	\$729,900
Bedrooms	4
Bathrooms	4.00
Full Baths	4
Square Footage	2,424
Acres	0.00
Year Built	2025
Type	Single Family
Sub-Type	Detached Single Family
Style	2 Storey
Status	Active

Community Information

Address	176 Caledon Crescent Crescent
Area	Spruce Grove
Subdivision	Copperhaven
City	Spruce Grove
County	ALBERTA
Province	AB
Postal Code	T7X 0Y6

Amenities

Amenities	Carbon Monoxide Detectors, Ceiling 9 ft., Deck, Hot Water Electric, No Animal Home, No Smoking Home, Walkout Basement, HRV System, Natural Gas BBQ Hookup, 9 ft. Basement Ceiling
Parking	Double Garage Attached

Interior

Interior Features	ensuite bathroom
Appliances	Garage Control, Garage Opener, Hood Fan, Builder Appliance Credit
Heating	Forced Air-2, Electric
Fireplace	Yes
Fireplaces	Wall Mount
Stories	2
Has Basement	Yes
Basement	Full, Unfinished

Exterior

Exterior	Wood, Asphalt, Stone, Vinyl
Exterior Features	Airport Nearby, Backs Onto Lake, Corner Lot, Cul-De-Sac, Schools, Shopping Nearby, Stream/Pond, Partially Fenced
Roof	Asphalt Shingles
Construction	Wood, Asphalt, Stone, Vinyl
Foundation	Concrete Perimeter

Additional Information

Date Listed	April 1st, 2025
Days on Market	18
Zoning	Zone 91

DATA IS DEEMED RELIABLE BUT IS NOT GUARANTEED ACCURATE BY THE REALTORS® ASSOCIATION OF EDMONTON. COPYRIGHT 2025 BY THE REALTORS® ASSOCIATION OF EDMONTON. ALL RIGHTS RESERVED. Trademarks are owned or controlled by the Canadian Real Estate Association (CREA) and identify real estate professionals who are members of CREA (REALTOR®, REALTORS®) and/or the quality of services they provide (MLS®, Multiple Listing Service®)

Listing information last updated on April 19th, 2025 at 4:32pm MDT