

Courtesy Of Janeen Tinker Of Real Broker

## \$239,900 - 3920 76 Street, Edmonton

MLS® #E4428403

**\$239,900**

3 Bedroom, 1.50 Bathroom, 1,139 sqft  
Condo / Townhouse on 0.00 Acres

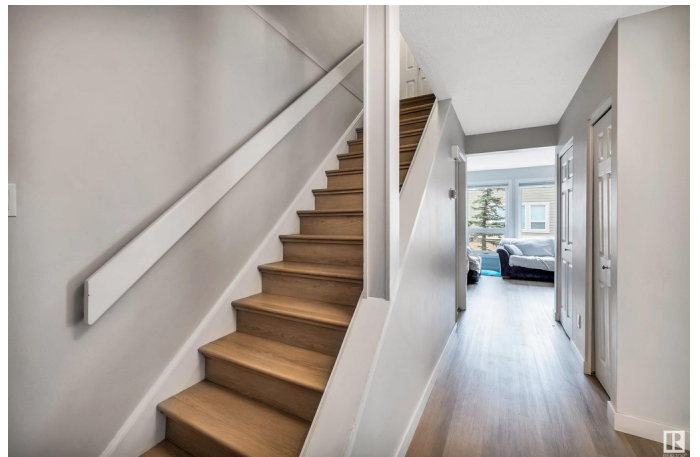
Tweddle Place, Edmonton, AB

Nestled in the heart of Tweedle Place, this beautifully updated townhome offers contemporary finishes and an unbeatable location! Featuring neutral paint, sleek baseboards, and durable vinyl plank flooring throughout, this home is move-in ready. Upstairs, you'll find three generously sized bedrooms, ample closet space, and a full bathroom—perfect for families. Step outside to your private fenced yard, ideal for relaxing. The rare double carport adds both privacy and convenience with protection from the elements. Surrounded by greenspace, this home is within walking distance of three schools and Millbourne Mall. Plus, shopping, Millwoods Rec Centre, public transportation, and all essential amenities are just minutes away. Don't miss this incredible opportunity to own a stylish, well-located home that combines comfort and convenience!

Built in 1975

### Essential Information

MLS® #	E4428403
Price	\$239,900
Bedrooms	3
Bathrooms	1.50
Full Baths	1
Half Baths	1



Square Footage	1,139
Acres	0.00
Year Built	1975
Type	Condo / Townhouse
Sub-Type	Townhouse
Style	2 Storey
Status	Active

### **Community Information**

Address	3920 76 Street
Area	Edmonton
Subdivision	Tweddle Place
City	Edmonton
County	ALBERTA
Province	AB
Postal Code	T6K 1V6

### **Amenities**

Amenities	Vinyl Windows, See Remarks
Parking Spaces	2
Parking	Double Carport

### **Interior**

Appliances	Dishwasher-Built-In, Dryer, Microwave Hood Fan, Refrigerator, Stove-Electric, Washer
Heating	Forced Air-1, Natural Gas
Stories	2
Has Basement	Yes
Basement	Full, Unfinished

### **Exterior**

Exterior	Wood, Hardie Board Siding
Exterior Features	Playground Nearby, Public Swimming Pool, Public Transportation, Schools, Shopping Nearby, See Remarks
Roof	Asphalt Shingles
Construction	Wood, Hardie Board Siding
Foundation	Concrete Perimeter

### **Additional Information**

Date Listed	April 1st, 2025
Days on Market	10
Zoning	Zone 29
Condo Fee	\$481

DATA IS DEEMED RELIABLE BUT IS NOT GUARANTEED ACCURATE BY THE REALTORS® ASSOCIATION OF EDMONTON. COPYRIGHT 2025 BY THE REALTORS® ASSOCIATION OF EDMONTON. ALL RIGHTS RESERVED. Trademarks are owned or controlled by the Canadian Real Estate Association (CREA) and identify real estate professionals who are members of CREA (REALTOR®, REALTORS®) and/or the quality of services they provide (MLS®, Multiple Listing Service®)

Listing information last updated on April 11th, 2025 at 8:02am MDT