

\$245,000 - 142 Kaskitayo Court, Edmonton

MLS® #E4428515

\$245,000

3 Bedroom, 1.50 Bathroom, 969 sqft
Condo / Townhouse on 0.00 Acres

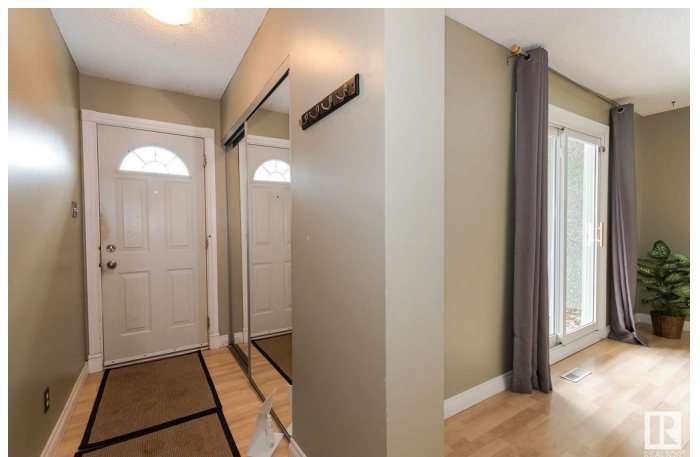
Blue Quill, Edmonton, AB

This Charming 3 Bedroom Townhouse in Kaskitayo Court is perfect for First Time Home Buyer. Well-maintained & located in sought-after Blue Quill area of Edmonton. Offering a functional layout & spacious living areas, this home is ideal for families, first-time buyers, or investors looking for a great opportunity. Bright & inviting main floor, where the large living room provides plenty of space for relaxing or entertaining. Enjoy outdoor living with your private patio, perfect for morning coffee or summer BBQs. Kitchen features ample cabinet space & room for all your culinary needs. A convenient half-bath completes the main level. Unfinished basement features utilities & laundry plus offers plenty of storage. This home includes assigned parking and is located in a well-managed complex. Situated in a prime location, youâ€™ll love being close to schools, parks, golf, shopping, and transit, with easy access to major roadways. Grab your chance to own this fantastic townhouse in a desirable community!

Built in 1978

Essential Information

MLS® #	E4428515
Price	\$245,000



Bedrooms	3
Bathrooms	1.50
Full Baths	1
Half Baths	1
Square Footage	969
Acres	0.00
Year Built	1978
Type	Condo / Townhouse
Sub-Type	Townhouse
Style	2 Storey
Status	Active

Community Information

Address	142 Kaskitayo Court
Area	Edmonton
Subdivision	Blue Quill
City	Edmonton
County	ALBERTA
Province	AB
Postal Code	T6J 3T3

Amenities

Amenities	Parking-Plug-Ins, Parking-Visitor, Vinyl Windows
Parking Spaces	1
Parking	Stall

Interior

Appliances	Dishwasher-Built-In, Dryer, Hood Fan, Refrigerator, Stove-Electric, Washer, Window Coverings
Heating	Forced Air-1, Natural Gas
Stories	2
Has Basement	Yes
Basement	Full, Unfinished

Exterior

Exterior	Wood, Stucco, Vinyl
Exterior Features	Corner Lot, Fenced, Landscaped, Playground Nearby, Public Swimming Pool, Public Transportation, Schools, Shopping Nearby
Roof	Asphalt Shingles

Construction	Wood, Stucco, Vinyl
Foundation	Concrete Perimeter

Additional Information

Date Listed	April 2nd, 2025
Days on Market	10
Zoning	Zone 16
Condo Fee	\$298

DATA IS DEEMED RELIABLE BUT IS NOT GUARANTEED ACCURATE BY THE REALTORS® ASSOCIATION OF EDMONTON. COPYRIGHT 2025 BY THE REALTORS® ASSOCIATION OF EDMONTON. ALL RIGHTS RESERVED. Trademarks are owned or controlled by the Canadian Real Estate Association (CREA) and identify real estate professionals who are members of CREA (REALTOR®, REALTORS®) and/or the quality of services they provide (MLS®, Multiple Listing Service®)

Listing information last updated on April 12th, 2025 at 9:17am MDT