

\$639,888 - 5075 Dewolf Road, Edmonton

MLS® #E4428750

\$639,888

3 Bedroom, 2.50 Bathroom, 2,108 sqft

Single Family on 0.00 Acres

Griesbach, Edmonton, AB

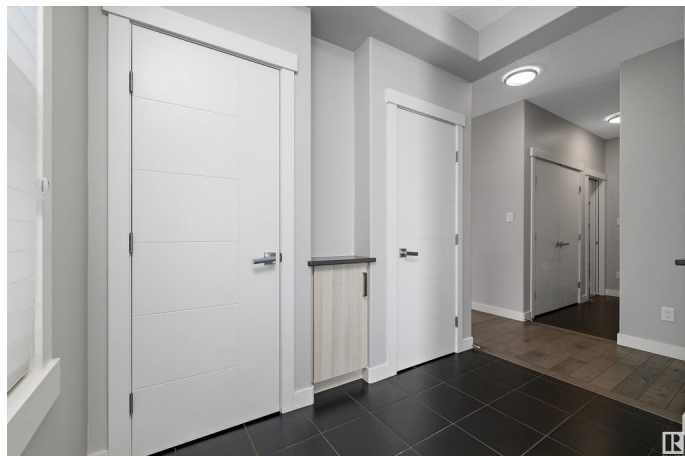
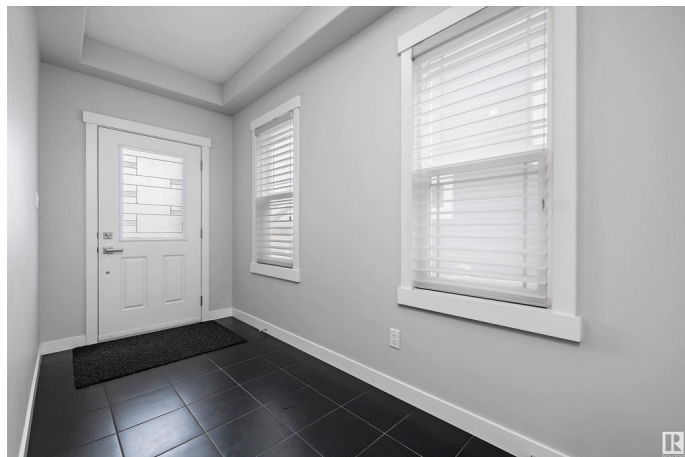
Extensively upgraded 2-storey in the award winning community of Griesbach! Built by Coventry Homes in 2015, this single owner property ft. 3 bedrooms, 2.5 bathrooms and a double attached garage. Enter and enjoy the open concept floor plan complemented by ceramic tile, premium hardwood, 9' ceilings, central A/C and South-facing windows. The culinary enthusiast will appreciate the contemporary two-tone kitchen offering: S/S appliances, Capital Cooking gas range, hood fan, quartz c-tops, RO system and walkthrough pantry. The welcoming living room is framed by a tile surround gas F/P & large windows. Entertain in the dining room that leads to your deck w/ BBQ hookup. Upstairs, you'll find a primary retreat ft. a 5pc ensuite w/ a large soaker tub and a W/I closet w/ California Closets organizers. Additionally, there's 2 spacious junior rooms, 4pc main bath, large bonus room and convenient laundry room w/ utility sink. Extras: custom Hunter Douglas blinds, 2 stage HE furnace and Tankless HW. Virtually staged.

Built in 2014

Essential Information

MLS® # E4428750

Price \$639,888



Bedrooms	3
Bathrooms	2.50
Full Baths	2
Half Baths	1
Square Footage	2,108
Acres	0.00
Year Built	2014
Type	Single Family
Sub-Type	Detached Single Family
Style	2 Storey
Status	Active

Community Information

Address	5075 Dewolf Road
Area	Edmonton
Subdivision	Griesbach
City	Edmonton
County	ALBERTA
Province	AB
Postal Code	T5E 6R5

Amenities

Amenities	Air Conditioner, Ceiling 9 ft., Closet Organizers, Deck, Vinyl Windows, Natural Gas BBQ Hookup, Natural Gas Stove Hookup
Parking	Double Garage Attached

Interior

Interior Features	ensuite bathroom
Appliances	Air Conditioning-Central, Dishwasher-Built-In, Dryer, Garage Control, Garage Opener, Hood Fan, Stove-Gas, Washer, Window Coverings
Heating	Forced Air-1, Natural Gas
Stories	2
Has Basement	Yes
Basement	Full, Unfinished

Exterior

Exterior	Wood, Stone, Vinyl
Exterior Features	Fenced, Flat Site, Landscaped, Level Land, Schools, Shopping Nearby
Roof	Asphalt Shingles

Construction	Wood, Stone, Vinyl
Foundation	Concrete Perimeter

School Information

Elementary	Major-General Griesbach
Middle	Major-General Griesbach
High	Queen Elizabeth School

Additional Information

Date Listed	April 3rd, 2025
Days on Market	8
Zoning	Zone 27

DATA IS DEEMED RELIABLE BUT IS NOT GUARANTEED ACCURATE BY THE REALTORS® ASSOCIATION OF EDMONTON. COPYRIGHT 2025 BY THE REALTORS® ASSOCIATION OF EDMONTON. ALL RIGHTS RESERVED. Trademarks are owned or controlled by the Canadian Real Estate Association (CREA) and identify real estate professionals who are members of CREA (REALTOR®, REALTORS®) and/or the quality of services they provide (MLS®, Multiple Listing Service®)

Listing information last updated on April 11th, 2025 at 10:17am MDT