

\$515,000 - 1725 Plum Crescent, Edmonton

MLS® #E4431351

\$515,000

3 Bedroom, 2.50 Bathroom, 1,771 sqft
Single Family on 0.00 Acres

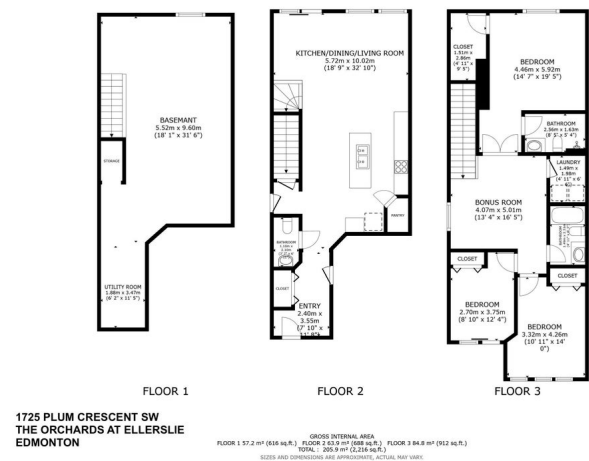
The Orchards At Ellerslie, Edmonton, AB

RARE PIE LOT HALF DUPLEX WITH 1700+ SQFT, 3 BEDS, 2.5 BATHS & ATTACHED GARAGE IN THE ORCHARDS AT ELLERSLIE! Welcome to 1725 Plum Crescent—set on a massive pie-shaped lot with a full deck, fenced yard, side entrance, and central A/C! Inside you’ll find open-concept living with oversized windows, a cozy electric fireplace, and stylish vinyl plank flooring throughout. The chef’s kitchen features quartz countertops, a gas range, pantry, and ample cabinetry. Upstairs offers a spacious bonus room—ideal for a home office or TV nook—plus 3 bedrooms, laundry room, and 2 full bathrooms. Located in The Orchards, with amazing amenities like a splash park, skating rink, tennis & basketball courts, clubhouse, community garden & more! Walking distance to Jan Reimer School, off-leash park, groceries & everyday essentials. Quick access to Anthony Henday, Calgary Trail & just 20 mins to the airport. Take a look today and get ready to move right on in—this is the one you’ve been waiting for!

Built in 2022

Essential Information

MLS® # E4431351
Price \$515,000



| | |
|----------------|---------------|
| Bedrooms | 3 |
| Bathrooms | 2.50 |
| Full Baths | 2 |
| Half Baths | 1 |
| Square Footage | 1,771 |
| Acres | 0.00 |
| Year Built | 2022 |
| Type | Single Family |
| Sub-Type | Half Duplex |
| Style | 2 Storey |
| Status | Active |

Community Information

| | |
|-------------|---------------------------|
| Address | 1725 Plum Crescent |
| Area | Edmonton |
| Subdivision | The Orchards At Ellerslie |
| City | Edmonton |
| County | ALBERTA |
| Province | AB |
| Postal Code | T6X 2Z8 |

Amenities

| | |
|----------------|---|
| Amenities | Air Conditioner, Ceiling 10 ft., Deck, Vinyl Windows, See Remarks, HRV System, Natural Gas BBQ Hookup, 9 ft. Basement Ceiling |
| Parking Spaces | 2 |
| Parking | Parking Pad Cement/Paved, Single Indoor |

Interior

| | |
|-------------------|--|
| Interior Features | ensuite bathroom |
| Appliances | Air Conditioning-Central, Dryer, Garage Control, Garage Opener, Hood Fan, Oven-Microwave, Refrigerator, Stove-Gas, Washer, Window Coverings, TV Wall Mount |
| Heating | Forced Air-1, Natural Gas |
| Fireplace | Yes |
| Fireplaces | Tile Surround |
| Stories | 2 |
| Has Basement | Yes |
| Basement | Full, Unfinished |

Exterior

| | |
|-------------------|---|
| Exterior | Wood, Stone, Vinyl |
| Exterior Features | Airport Nearby, Fenced, Landscaped, No Back Lane, Playground Nearby, Public Transportation, Recreation Use, Schools, Shopping Nearby, See Remarks |
| Roof | Asphalt Shingles |
| Construction | Wood, Stone, Vinyl |
| Foundation | Concrete Perimeter |

School Information

| | |
|------------|-------------------------|
| Elementary | Jan Reimer School (K-6) |
| Middle | Jan Reimer School (7-9) |
| High | J. Percy Page School |

Additional Information

| | |
|----------------|------------------|
| Date Listed | April 17th, 2025 |
| Days on Market | 2 |
| Zoning | Zone 53 |
| HOA Fees | 428.57 |
| HOA Fees Freq. | Annually |

DATA IS DEEMED RELIABLE BUT IS NOT GUARANTEED ACCURATE BY THE REALTORS® ASSOCIATION OF EDMONTON. COPYRIGHT 2025 BY THE REALTORS® ASSOCIATION OF EDMONTON. ALL RIGHTS RESERVED. Trademarks are owned or controlled by the Canadian Real Estate Association (CREA) and identify real estate professionals who are members of CREA (REALTOR®, REALTORS®) and/or the quality of services they provide (MLS®, Multiple Listing Service®)

Listing information last updated on April 19th, 2025 at 10:17am MDT